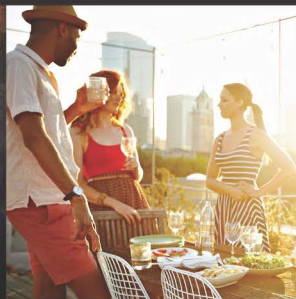




Affordable Housing **FOR RENT** IN WHEATON



Studio, one-bedroom, and two-bedroom rentals available through the affordable housing program for qualifying future residents at AVA Wheaton.

Now accepting wait-list pre-applications. AVA Wheaton residents are responsible for electric, phone, and cable utilities. Additional monthly fees may apply for parking and pets. An increased security deposit will be required for households with pets.



www.AVAWHEATON.com
Mail to 2425 Blueridge Avenue Wheaton, MD 20902
Fax: 301-933-8541
Wheaton@AvaApartments.com



HOUSEHOLDS MUST BE WITHIN THE INCOME LEVELS BELOW TO QUALIFY
Monthly rent is based on the Area Median Income (AMI)

65% PROGRAM

STUDIO: \$1,218* PER MONTH

1 person household max income \$69,500

2 person household max income \$79,500

1-BEDROOM: \$1,305* PER MONTH

1 person household max income \$69,500

2 person household max income \$79,500

3 person household max income \$89,500

2-BEDROOM 1-BATH: \$1,574* PER MONTH

2 person household max income \$79,500

3 person household max income \$89,500

4 person household max income \$99,500

5 person household max income \$107,500

2 BEDROOM 2-BATH \$1,660* PER MONTH

2 person household max income \$79,500

3 person household max income \$89,500

4 person household max income \$99,500

5 person household max income \$107,500

* Move in rents for voucher holders may be based upon the current HUD published Section 8 FMR.



Scan Here to be added to our wait list!

*Rents subject to change at anytime without notice. Apartments contain FHA compliant features for persons with disabilities.

